

NAVIGATORS presents BAR.CO



Main Specification

| | | | |
|-----------------|---|---------------|----------------------------|
| Type: | Flybridge Motor Yacht | Builder: | Geta Genel Tasarin, Turkey |
| Model: | Atlantic 25 | Year: | 1991 |
| Registry: | Düsseldorf/Germany | Construction: | Steel |
| Classification: | build under Lloyd's | | |
| Accommodation | 7 guests in 4 cabins / 4 crew in 2 cabins | | |
| Location: | Palma de Mallorca | Contact: | Navigators International |
| Asking Price: | 1.100.000 EUR (VAT paid) | | |

Dimensions

| | |
|----------------|----------------|
| Length O.A.: | 25,8 m / 84'6" |
| Beam: | 6.00 m / 19'7" |
| Draft: | 2.10 m / 6'11" |
| Gross tonnage: | 140 GT |
| Net tonnage: | 73 tons |

Performance

| | |
|-------------------|--------------------|
| Maximum speed: | 12 knots |
| Cruising speed: | 10 knots |
| Fuel consumption: | 65 lph 10 knots |
| Range: | 2.500 nm @ 8 knots |

Machinery

| | |
|------------------|-------------------------------|
| Engines: | 2 x Caterpillar 3406B, 300 HP |
| Engine hours: | 2.530 |
| Generators: | 2 x G&M 25 kW, 1 G&M 9 kW |
| Generator hours: | 4.200 |

Propulsion

| | |
|-------------|---|
| Steering: | Twin rudder electro-hydraulic steering system |
| Propellers: | 2 x 4 blade propeller |
| Gearbox: | Caterpillar |

Auxiliary Equipment

| | |
|--------------------------|--|
| Bow thruster: | 75 hp Richfield hydraulic Thrusters |
| Water maker: | Marinco 3.000 litre/day |
| Fresh water pressure: | 1 x 230 V Pump (new 2008), 2 x 24 V Pumps (tanks new 2008) |
| Hot water: | 240 litre with 2 heating rods (new 2008) |
| Stabilizers: | Vosper Series 100 |
| Black/grey water system: | 2 Jabsco utility pumps for discharge (new 2007) |
| Fuel purifier: | Separ KWA-52UT |
| Air-conditioning: | Lunair reverse cycle, throughout |

Tankage

| | |
|-----------------------|--|
| Fuel: | 11.000 l main tank, 2 day tanks 1.000 l each |
| Consumption (approx): | 40 lph @ 8 knots approx. |
| Fresh water: | 6.500 l |
| Grey water: | 3.050 l |
| Black water: | 2.090 l |

Electrical System

| | |
|---------------------|---|
| Batteries: | 800 Ah/24 V service batteries AGM (new 2006) 2 x 180 Ah/24 V starter batteries CAT (new 2006) 2 x 100 Ah/24 V starter batteries generator 1 & 2 (new 2007) 50 Ah/12 V starter battery generator 3 (new 2007) |
| Shore power: | 220 V 63 Ah |
| Charger / Inverter: | 3 Mastervolt 24/2000-60 charger/inverter for service bat (2007) 1 Mastervolt Charge Master 24/40-3 for CAT starter bat (2008) 1 Sterling charger AB24-150 for service bat (from CAT) (2007) |

Up to 18 hours on inverter, recharging time 3 hours

Navigation Equipment

| | |
|----------------------|---|
| Navigation Computer: | 2 VISTA-PC (1 as backup and Media centre) (new 2008) <ul style="list-style-type: none"> • Transas Navigator software with integration of <ul style="list-style-type: none"> ○ AIS ○ Navtex ○ Water temperature and deep sounder by NMEA • professional vector charts from Spain to Greece • 2. monitor (sun readable) and keyboard on flybridge • protected by uninterrupted power supply |
| Autopilot: | Robertson AP45 with remote Control on Fly |
| Radar: | Furuno 72 mi & Furuno 48 mi with Nav plotter |
| Electronic chart: | B & G LCD chart plotter as backup for Nav-Computer |
| GPS: | Furuno satellite compass SC-50 (new 2008) |
| Deep Sounder: | VDO |

Communication and Satellite Equipment

| | |
|----------------------|---|
| Inmarsat-M: | Saturn |
| Navtex: | Transas Navtex |
| SAT-Mobile: | Global star |
| GSM/GPRS/3G: | Internet-router with Skype phone (new 2007) |
| VHF: | Simrad RS87 VHF-DSC with second station on fly, intercom to aft deck and 2 megaphones incl. fog signals |
| Telephone exchange: | Panasonic, 8 stations, shore line possible |
| VHF hand held radio: | ICOM |
| Printer / fax: | HP inkjet (new 2008) |

Entertainment Equipment

| | |
|--------------------|---|
| Multimedia System: | Vista Media Centre (Video, DVD, Music, Photos) (new 2007) |
| Satellite: | Seatel 2494 |
| Music system: | Multiroom SONOS, 6 zones (new 2007) <ul style="list-style-type: none">• MP3-Archiv• Internet radio• 3 Interactive remote controls• IPod- / I phone-Integration• 5 pairs Bose loudspeaker, 1 pair loudspeaker JBL and 2 canton subwoofer |
| TV: | Sony Bravia 32" LCD, Full-HD (new 2007) |

Domestic Appliances, Equipment and Laundry

| | |
|------------------------|---|
| Refrigerator: | 2 x Bosch in galley (new 2007), 1 extra in salon (new 2006) |
| Freezer: | 2 x Bosch in galley (new 2007), 1 extra in salon |
| Oven: | Bosch (new 2008) |
| Stove: | Bosch (new 2008) |
| Coffee machine: | Jura Impressa (new 2007) |
| Exhaust hood and fan: | Bosch (new 2008) |
| Microwave: | Bosch (new 2008) |
| Icemaker: | TCM (new 2007) |
| Dishwasher: | Miele |
| Washing machine/Dryer: | Teka 6 + 3 kg (new 2007) |

Accommodation

7 guests in 4 cabins and 4 crew in 2 cabins

Owner

Cabin: 1 large double cabin with settee, walk-in wardrobe, cupboards, make up table, shoe cupboard, safe,
Berths: King berth
Bathroom: En-suite with full size bathtub, toilet, bidet

Guest Port

Cabin: twin cabin with 1 wardrobe and cupboards
Berths: 2 single
Bathroom: En-suite with full size bathtub, toilet, bidet

Guest Starboard

Cabin: twin cabin with 2 wardrobes and cupboards
Berths: 2 single
Bathroom: En-suite with full size bathtub, toilet, bidet

Guest Single

Cabin: single cabin with cupboards
Berths: 1

Crew

Cabins: 2 cabins with 2 twin, 1 Safe, 1 with access from foredeck
Shower rooms: 2
Crew Mess Bench, dining table

Interior Finish

Van Besouw Carpet in all cabins and salon (new 2006)
All bathrooms, galley, bridge floors in varnish wood
Walls in ash

Deck Equipment

| | |
|-----------------|--|
| Anchors: | 2 x 100 kg Anchor with admiralty pattern chain, 100 m x 14 mm |
| Crane: | Opacmare telescope crane 3030/33 for tender, 500 kg (2006) |
| Windlass: | Lofrans windlass Ercole with RF-remote control 2 x Lofrans capstans of aft deck for docking |
| Passarelle: | Opacmare telescope passarelle 4994/29 (2006), 2 remote control |
| Bathing ladder: | Removable stainless steel swim ladder with teak |
| Bimini top: | Bimini top over steering position Umbrella over seating area |

Tender and toys

| | |
|--------------|--|
| Tenders: | Novourania 430 with Yamaha 70 hp (out boarder new 2005) Optimist sailing boat for children (new 2007) |
| Toys: | 2 pairs water ski, inflatable kayak for 2, tube, rocket, 2, 5 m rubber dinghy, snorkelling equipment. |
| Supplement : | Air compressor for toys in engine room |

Safety

| | |
|---------------------------|--|
| Liferafts: | BFA Pacific, 8 person (new 2005) |
| Life jackets: | 8 x Secumare automatic life jackets with lights 6 x solid life jackets |
| Fire –fighting equipment: | FM-200 fire extinguishing system in engine room (new 2005) 3 x CO2 extinguisher (new 2005) 6 ABC extinguisher (new 2005) |

Safety continued

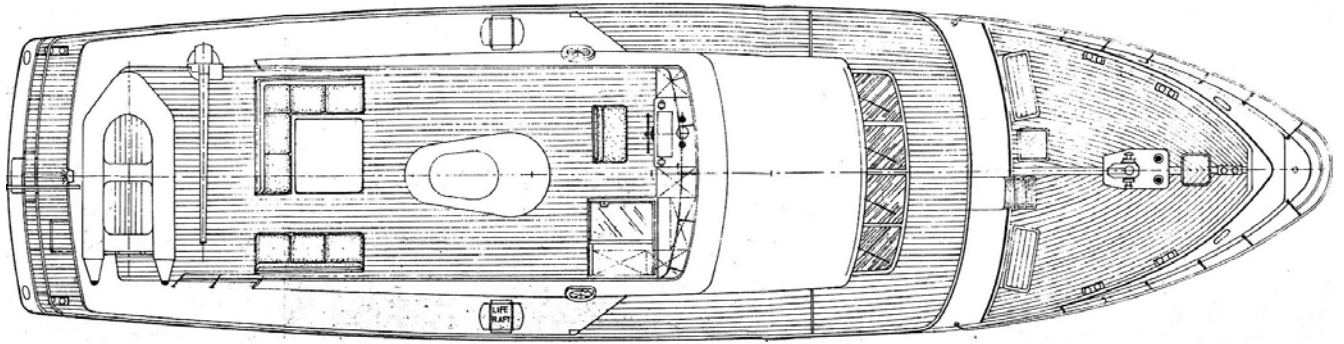
| | |
|--------------|--|
| Alarms: | Fire alarm in engine room Smoke alarm sensors in all areas (new 2005) Bilge Alarm (alarm on bridge and crew mess) Carbon monoxide alarm in engine room (new 2005) |
| EPIRB: | McMurdo G4A with GPS (new 2005) |
| Bilge pumps: | 2 x Gianneschi & Ramacciotti EM112/4 Build under Lloyd's, not in class since 1998 |

Classification

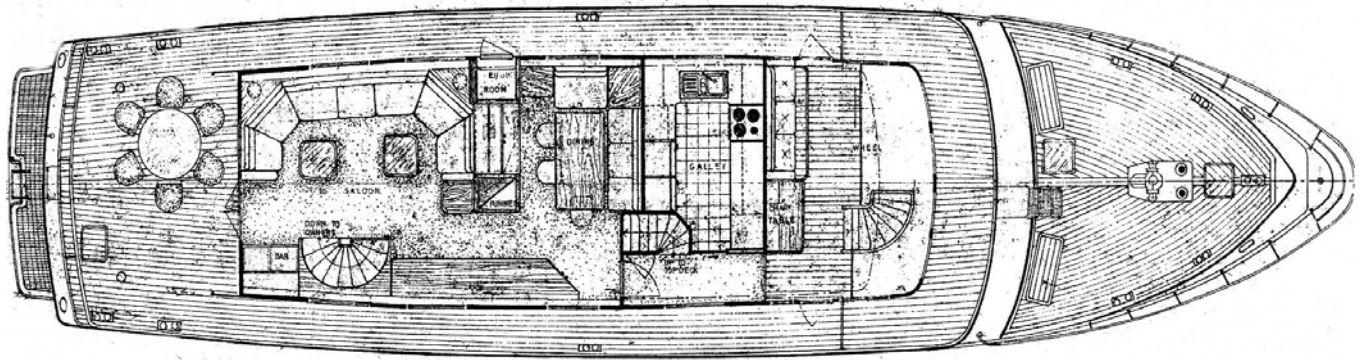
| | |
|--------|------------------------------------|
| Class: | |
| MCA: | Possible, about 15.000 € to invest |

Comments

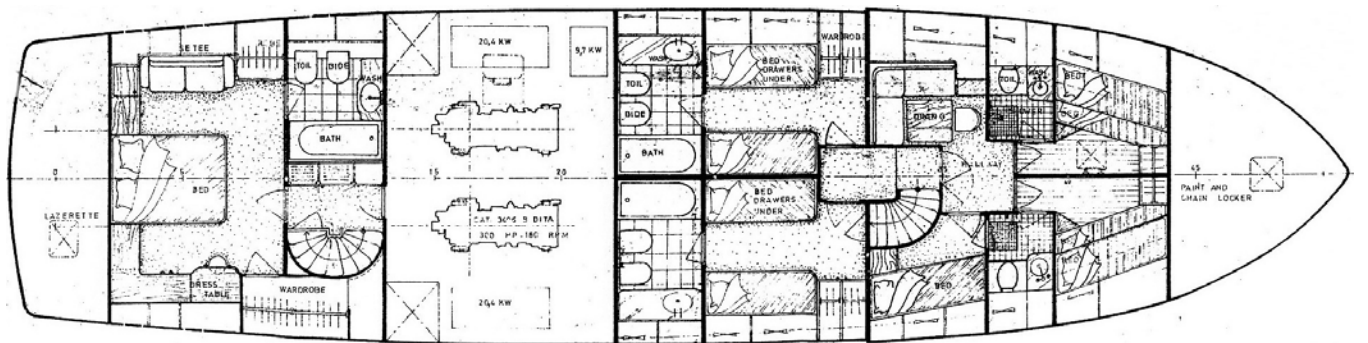
- Classic exterior layout with the convenience of a modern yacht
- Extremely seaworthy steel yacht
- Transatlantic range and equipment (steel plates for the windows)
- Very reliable systems with backup system for all important tasks
- 4 underwater lights astern
- 10 weeks exterior refit on shipyard in 2007
- Tools and spare parts are on board



Flybridge



Main deck



Lower deck



1. Salon



2. Dining



3. Master cabin



4. Master bathroom



5. Guest bedroom (twin)



6. Guest bathroom



7. Crew cabin



8. Crew mess



9. Galley



10. Helm Station



11. Aft deck



12. Bar.co

Disclaimer

The Company offers the details of this vessel in good faith but cannot guarantee or warrant the accuracy of this information nor warrant the condition of the vessel. A buyer should instruct his agents, or his surveyors, to investigate such details as the buyer desires validated. This vessel is offered subject to prior sale, price change, or withdrawal without notice.